

**SOCIAL SCIENCE**  
**WORKSHEET\_130425**  
**Geography - Chapter 04 Agriculture**

**SUBJECT: SOCIAL SCIENCE**

**MAX. MARKS : 40**

**CLASS : X**

**DURATION : 1½ hrs**

**General Instructions:**

- (i). All questions are compulsory.
- (ii). This question paper contains **18 questions** divided into five Sections A, B, C, D and E.
- (iii). **Section A** comprises of **8 MCQs** of **1 mark** each. **Section B** comprises of 3 questions of **2 marks** each. **Section C** comprises of 3 questions of **3 marks** each. **Section D** comprises of 2 questions of **5 marks** each and **Section E** comprises of 1 Case Study Based Questions of **4 marks** each.
- (iv). There is no overall choice.
- (v). Use of Calculators is not permitted

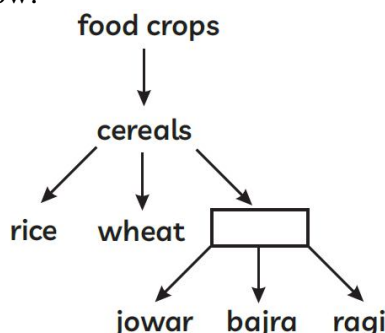
**SECTION – A**

**Questions 1 to 8 carry 1 mark each.**

1. Observe the given picture and identify the type of farming in which this tool is used.



- (a) Primitive Subsistence Farming      (b) Slash and Burn  
(c) Intensive Subsistence Farming      (d) Commercial Farming
2. Choose the correctly matched pair about the crops and the areas they are grown in :  
(a) Groundnut-Assam      (b) Tea-Gujarat  
(c) Coffee-Karnataka      (d) Sugarcane-Chhattisgarh
3. Observe the flow chart given below:



What will come in the empty box?

- (a) Gram      (b) Maize      (c) Millets      (d) Pulse
4. Identify the crop with the help of the following information:  
(I) It is a crop which is used as both food and fodder.  
(II) It is a kharif crop which requires temperature between 21°C to 27°C.  
(III) It grows well in old alluvial soil.

(IV) Use of modern inputs have contributed to the increasing production of this crop.

Options:

- (a) Wheat                      (b) Maize                      (c) Rice                      (d) Sugarcane

5. Which among the following movements is also known as the Blood-less revolution?

- (a) Bhodan-Gramdan movement                      (b) Russian Revolution  
(c) Second World War                      (d) French Revolution

6. Which one of the following is not true for pulses?

- (a) Pulses are grown in both Kharif and Rabi seasons.  
(b) Pulses require intensive and excessive irrigation facilities.  
(c) They are grown in rotation to replenish fertility of the soil.  
(d) Pulses are leguminous crops.

**In the following questions 7 and 8, a statement of assertion (A) is followed by a statement of Reason (R). Choose the correct answer out of the following choices.**

- (a) Both Assertion (A) and Reason (R) are true and Reason (R) is the correct explanation of Assertion (A)  
(b) Both Assertion (A) and Reason (R) are true and Reason (R) is not the correct explanation of Assertion (A)  
(c) Assertion (A) is true but Reason (R) is false  
(d) Assertion (A) is false but Reason (R) is true

7. **Assertion (A):** The Government of India buys wheat and rice from farmers at a fair price.

**Reason (R):** The public sector contributes to economic development.

8. **Assertion (A):** Subsidy on fertilisers is decreased leading to increase in the cost of production.

**Reason (R):** Subsidy is the discount on agricultural products.

### **SECTION – B**

**Questions 9 to 11 carry 2 marks each.**

9. Explain any two features of Intensive Subsistence farming.

10. (a) By which name is the specialised cultivation of fruits and vegetables known?

(b) Describe “Jhumming Cultivation” in one sentence.

11. Why do farming practices vary in different regions? Give two major reasons.

**OR**

Which crop in India is known as golden fibre? What are its uses?

### **SECTION – C**

**Questions 12 to 15 carry 3 marks each.**

12. Describe any three main features of Rabi crop season and Kharif crop season.

13. Differentiate between commercial farming and plantation farming.

**OR**

What is the importance of pulses in our country? Why are pulses grown as a rotation crop?

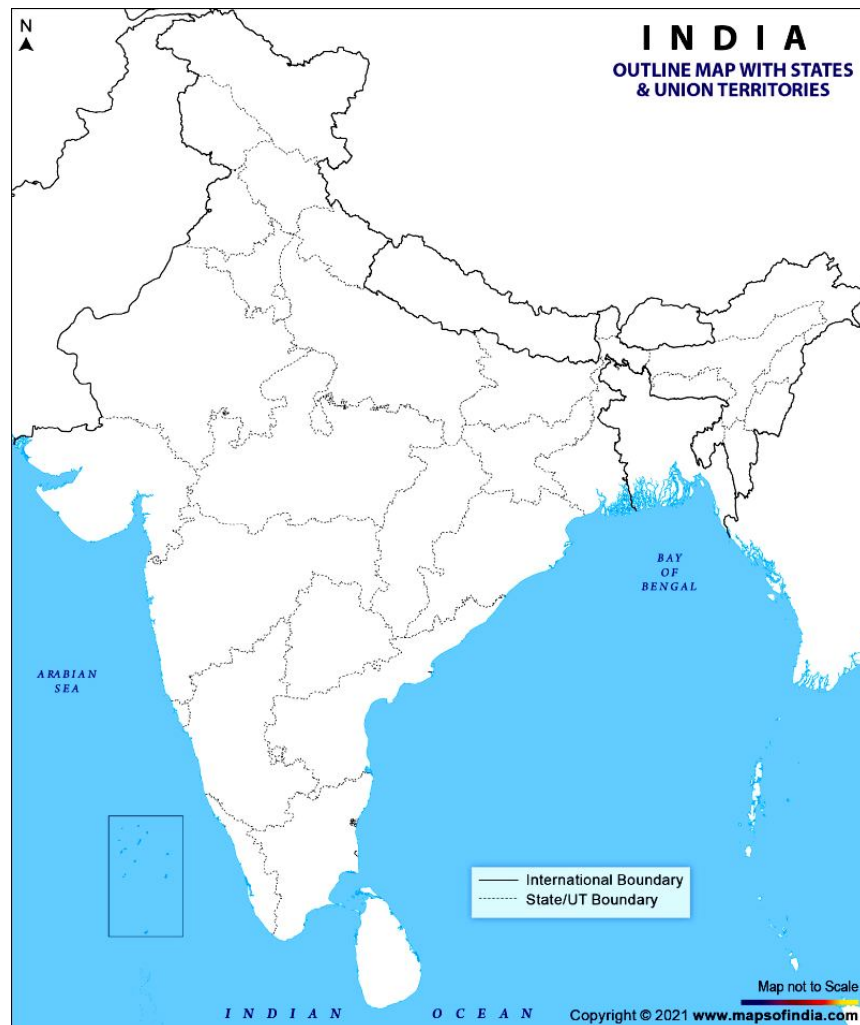
14. What are the growing conditions required for the main staple food crop of India? Mention the main growing regions.

**OR**

Describe the geographical conditions required for the growth of 'wheat' in India.

15. Mark the following on the given outline political map of India:

- (a) Major sugarcane producing states      (b) One rubber producing state.  
(c) Major cotton producing states.      (d) Two tea producing states.  
(e) One coffee producing state.      (f) One jute producing state.



### **SECTION – D**

**Questions 16 to 17 carry 5 marks.**

16. Explain any three institutional reforms taken for the development of Indian agriculture.

**OR**

Why is agriculture called the backbone of Indian economy? Explain.

17. Explain any five initiatives taken by the government to ensure the increase in agricultural production.

**OR**

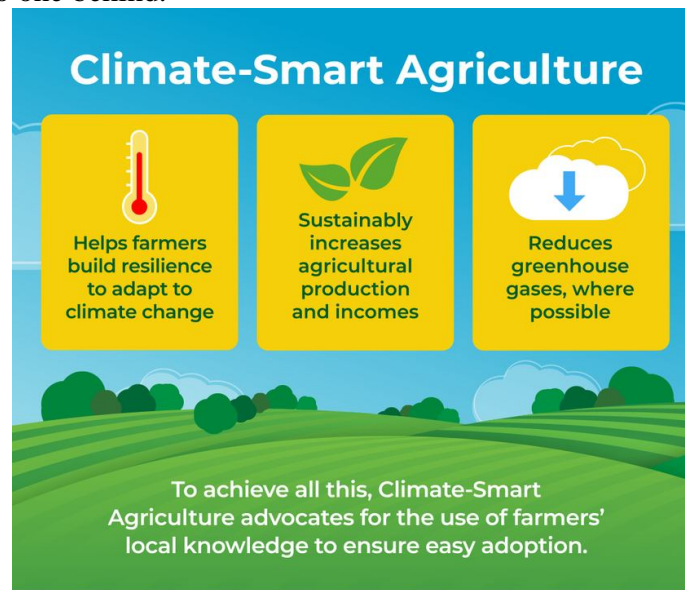
What are millets? Give brief description of the climatic conditions and producing states of the millets grown in India.

### **SECTION – E (Case Study Based Questions)**

**Questions 18 carry 4 marks each.**

18. Climate-smart agriculture (CSA) is an approach that helps guide actions to transform agri-food systems towards green and climate- resilient practices. CSA supports reaching internationally-agreed goals such as the Sustainable Development Goals and the Paris Agreement on climate change. CSA supports the Food and Agriculture Organisation Strategic Framework 2022-2031

based on the Four Betters: better production, better nutrition, a better environment and a better life for all, leaving no one behind.



Source (edited): Food and Agriculture Organisation

- (a) A CSA expert suggested increased production and consumption of millets in India. Justify their stance.
- (b) What is the necessity to think of CSA in India according to the case?
- (c) Suggest two methods through which India can shift towards CSA as given in the source.

.....