

GRADE X

Question Bank (MATHEMATICS)

Chapter-3 Pair of linear equations in two variables

1 marks:

- If the system of equations $3x + y = 1$ and $(2k - 1)x + (k - 1)y = 2k + 1$ is inconsistent then k is
a) -1 b) 0 c) 1 d) 2
 - For what value of k, the system of equations $kx + 3y = 1$, $12x + ky = 2$ has no solution
a) $k = -6$ b) $k \neq -6$ c) $k = 4$ d) $k = -4$
 - For what value of p the system of equations have no solution
 $(2p - 1)x + (p - 1)y = 2p + 1, y + 3x - 1 = 0$
a) $p = 2$ b) $p \neq 2$ c) $p = 4$ d) $p \neq 4$
 - For which value(s) of p, will the lines represented by the following pair of linear equations be parallel $3x - y - 5 = 0$ and $6x - 2y - p = 0$
a) All real values except 10 c) 10
b) $5/2$ d) $1/2$
 - If the lines given by $3x + 2ky = 2$ and $2x + 5y + 1 = 0$ are parallel then value of k is
a) $-5/4$ b) $2/5$ c) $15/4$ d) $3/2$
 - The pair of equations $ax + 2y = 9$ & $3x + by = 18$ represent parallel lines, where a, b are integers if **[BOARD 2023]**
a) $a = b$ b) $3a = 2b$ c) $2a = 3b$ d) $ab = 6$
 - The pair of equations $2kx + 5y = 7, 6x - 5y = 11$ has a unique solution, if
a) $k \neq -3$ b) $k \neq \frac{2}{3}$ c) $k \neq 5$ d) $k \neq \frac{2}{9}$
 - For what value of p does the pair of linear equations given below has unique solution $4x + py + 8 = 0$ and $2x + 2y + 2 = 0$
a) $p = 1$ b) $p = 2$ c) $p \neq 4$ d) $p \neq 2$
 - The condition for the system of linear equations $ax + by = c$ & $lx + my = n$ to have a unique solution is **[BOARD 2023]**
a) $am \neq bl$ b) $al \neq bm$ c) $al = bm$ d) $am = bl$
 - For what value of k, the equations $3x - y + 8 = 0, 6x - ky = -16$ represent coincident lines **[BOARD 2023]**
-

- a) $1/2$ b) $-1/2$ c) 2 d) -2
11. The value of k for which the pair of equations $kx = y + 2$ & $6x = 2y + 3$ has infinitely many solutions, is **[BOARD 2023]**
- a) $k = 3$ b) $k = -3$ c) $k = 4$ d) doesn't exist
12. For what value of k , the equations $kx + y = k^2$ and $x + ky = 1$ have infinitely many solutions. **[BOARD 2024]**
- a) 1 b) 2 c) 3 d) 4
13. The value of k for which the pair of equations $6x + y = 3k$ & $36x + 6y = 3$ have infinitely many solutions, is **[BOARD 2025]**
- a) 6 b) $\frac{1}{6}$ c) $\frac{1}{2}$ d) $\frac{1}{3}$
14. The value of 'p' for which equations $px + 3y = p - 3$ and $12x + py = p$ has infinitely many solutions is **[BOARD 2025]**
- a) -6 only c) 6 only
b) ± 6 d) any real number except ± 6
15. One equation of a pair of dependent linear equation $-5x + 7y = 2$. The second equation can be
- a) $10x + 14y + 4 = 0$ c) $-10x - 14y + 4 = 0$
b) $-10x + 14y + 4 = 0$ d) $10x - 14y + 4 = 0$
16. Two lines are given to be parallel. The equation of one of the lines is $4x + 3y = 14$ then the equation of the second line will be **[BOARD 2024]**
- a) $12x + 9y = 42$ c) $12x + 9y = 5$
b) $12x + 8y = 15$ d) $12x + 8y = 42$
17. Given the linear equation $3x + 4y = 9$, select another linear equation in these two variables such that the geometrical representation of the pair so formed is intersecting lines
- a) $3x - 5y = 10$ c) $6x + 8y = 18$
b) $8x + 12y = 18$ d) above all
18. If $x = 1$ and $y = 2$ is a solution of the pair of linear equations $2x - 3y + a = 0$ and $2x + 3y - b = 0$ then **[BOARD 2025]**
- a) $a = 2b$ b) $2a = b$ c) $a + 2b = 0$ d) $2a + b = 0$
19. If $x = a$ and $y = b$ is the solution of the equation $x - y = 2$ and $x + y = 4$ then the values of a and b are, respectively
- a) 3 and 5 b) 5 and 3 c) 3 and 1 d) -1 and -3
-

20. What are the values of x and y for the following pair of linear equations?

$$3x + 2y - 7 = 0 \text{ and } 4x + y - 6 = 0$$

- a) 1 and 2 b) 2 and 2 c) 1 and 1 d) -1 and -1

21. The solutions of the pair of equations $x + y = a + b$ & $ax - by = a^2 - b^2$ is

[BOARD 2023]

- a) $x = b, y = a$ b) $x = -a, y = b$ c) $x = a, y = b$ d) $x = a, y = -b$

22. If $ax + by = a^2 - b^2$ and $bx + ay = 0$ then the value of $x + y$ is

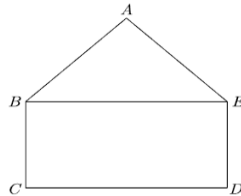
[BOARD 2024]

- a) $a^2 - b^2$ b) $a + b$ c) $a - b$ d) $a^2 + b^2$

23. If $2x + y = 23$ and $4x - y = 19$ the value of $(5y - 2x)$ and $\left(\frac{y}{x} - 2\right)$ will be

- a) $-\frac{5}{7}, 31$ b) $31, -\frac{5}{7}$ c) $37, \frac{2}{7}$ d) $\frac{2}{7}, 37$

24. In the figure, ABCDE is a pentagon with $BE \parallel CD$ and $BC \parallel DE$. BC is perpendicular to CD. $AB = 5 \text{ cm}, AE = 5 \text{ cm}, BE = 7 \text{ cm}, BC = x - y$ and $CD = x + y$. If the perimeter of ABCDE is 27 cm. The value of x and y will be



- a) 3 and 2 b) 2 and 3 c) 1 and 6 d) 6 and 1

25. The pair of equations $x = a$ and $y = b$ graphically represents lines which are

[BOARD 2023]

- a) Parallel c) intersecting at (a, b)
b) coincident d) intersecting at (b, a)

26. If a pair of linear equations is consistent then the lines will be

- a) Parallel c) always coincident
b) Intersecting or coincident d) always intersecting

27. What do you say about the lines represented by $2x + y = 3$ and $4x + 2y = 6$?

[BOARD 2023]

- a) Parallel c) coincident
b) Intersecting d) none of these

28. A system of two linear equations in two variables is inconsistent, if the lines in the graph are

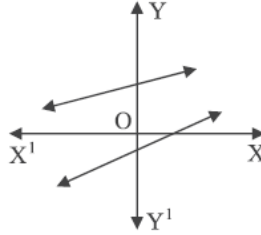
[BOARD 2025]

- a) parallel c) coincident
-

b) $3x + y = 900, 5x + 3y = 2100$

d) $x + 3y = 900, 5x + 3y = 2100$

39. In the given figure, graphs of two linear equations are shown. The pair of these linear equations is **[BOARD 2024]**



- a) Consistent with unique solution
- b) Consistent with infinitely many solutions
- c) Inconsistent
- d) Inconsistent but can be made consistent by extending these lines.

Options for Assertion and Reasoning Questions:

- a) Both assertion(A) and reason(R) are true and reason(R) is the correct explanation of assertion(A)
 - a) Both assertion(A) and reason(R) are true but reason(R) is not the correct explanation of assertion(A)
 - b) Assertion (A) is true but reason (R) is false
 - c) Assertion (A) is false but reason (R) is true
40. **Assertion (A):** The pair of equations $px + 3y + 59 = 0$ and $2x + 6y + 118 = 0$ will have infinitely many solutions if $p = 1$.

Reason (R): If the pair of equations $px + 3y + 19 = 0$ and $2x + 6y + 157 = 0$ has a unique solution then $p \neq 1$. **[BOARD 2025]**

41. **Assertion (A):** $x + y - 4 = 0$ and $2x + ky - 3 = 0$ has no solution if $k = 2$.

Reason (R): $a_1x + b_1y + c_1 = 0$ and $a_2x + b_2y + c_2 = 0$ are consistent if $\frac{a_1}{a_2} \neq \frac{b_1}{b_2}$.

42. **Assertion (A):** Pair of linear equations $9x + 3y + 12 = 0$ and $8x + 6y + 24 = 0$ have infinitely many solution.

Reason (R): Pair of linear equations $a_1x + b_1y + c_1 = 0$ and $a_2x + b_2y + c_2 = 0$ have infinitely many solutions if $\frac{a_1}{a_2} = \frac{b_1}{b_2} = \frac{c_1}{c_2}$.

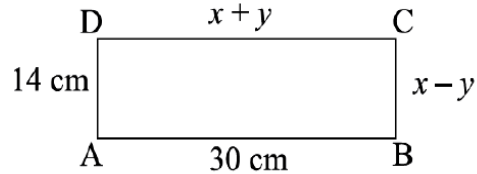
2 marks:

1. For what value of k for which the following pair of linear equations have infinitely many solutions? $2x - 3y = 7, (k + 2)x - (2k + 1)y = 3(2k - 1)$.

2. For what value of k will the following pair of linear equations have no solution?

$$3x + y = 1, (2k - 1)x + (k - 1)y = 2k + 1.$$

3. For what value of p will the following pair of linear equations have infinitely many solutions? $(p - 3)x + 3y = p$ and $px + py = 12$.
4. If the system of equations $2x + 3y = 7$ and $(a + b)x + (2a - b)y = 21$ has infinitely many solutions, then find a and b .
5. In figure, ABCD is a rectangle. Find the values of x and y .



6. Solve for x and y : $\sqrt{2}x + \sqrt{3}y = 5$ and $\sqrt{3}x - \sqrt{8}y = -\sqrt{6}$. **[BOARD 2025]**
7. Solve $30x + 44y = 10$ and $40x + 55y = 13$ algebraically. **[BOARD 2025]**
8. Solve $37x + 63y = 137$ and $63x + 37y = 163$ algebraically. **[BOARD 2025]**
9. Solve $73x - 37y = 109$ and $37x - 73y = 1$ algebraically. **[BOARD 2025]**
10. Solve $101x + 102y = 304$ and $102x + 101y = 305$ algebraically. **[BOARD 2025]**
11. Solve $217x + 131y = 913$, $131x + 217y = 827$. **[BOARD 2023]**
12. Solve the pair of equations $x = 3$ & $y = -4$ graphically. **[BOARD 2023]**
13. Using graphical method, find whether following system of linear equations is consistent or not $x = 0$ & $y = -7$. **[BOARD 2023]**
14. Solve $7x - 2y = 5$ & $8x + 7y = 15$ and verify your answer. **[BOARD 2024]**
15. Sum of two numbers is 105 and their difference is 45. Find the numbers. **[BOARD 2024]**
16. The cost of 2 kg apples and 1 kg of grapes on a day was found to be Rs 320. The cost of 4 kg apples and 2 kg grapes was found to be Rs 600. If cost of 1 kg of apples and 1 kg of grapes is Rs x and Rs y respectively. Represent the given situation algebraically as a system of equations and check whether the system so obtained is consistent or not. **[BOARD 2025]**
17. In a pair of supplementary angles, the greater angle exceeds the smaller by 50° . Express the given situation as a system of linear equations in two variables and hence obtain the measure of each angle. **[BOARD 2025]**

3 marks:

1. Solve for x and y : $\frac{x}{2} + \frac{2y}{3} = -1$ and $x - \frac{y}{3} = 3$.
-

2. Solve for x and y: $\frac{x+1}{2} + \frac{y-1}{3} = 9$ and $\frac{x-1}{3} + \frac{y+1}{2} = 8$.
3. Solve for x and y: $ax + by = \frac{a+b}{2}$ and $3x + 5y = 4$.
4. Solve: $2x - y - 2 = 0$ and $-4x + y + 4 = 0$. Also, find absolute difference between the ordinates of the points where given lines cut y-axis. **[BOARD 2025]**
5. Solve: $2x + y = 5$ and $4x - y = 7$ graphically. Hence, write the coordinates of the points where given lines meet y-axis. **[BOARD 2025]**
6. Solve $2x + 3y = 6$ and $x + y - 1 = 0$ graphically. Also, find the sum of ordinates of the points where given lines meet y-axis. **[BOARD 2025]**
7. Check whether the following pair of equations is consistent or not. If consistent, solve graphically $x + 3y = 6$ and $3y - 2x = -12$. **[BOARD 2025]**
8. Check whether the following pair of equations is consistent or not. If consistent, solve graphically $x - 2y + 4 = 0$ and $2x - y - 4 = 0$. **[BOARD 2025]**
9. Determine the values of m and n so that the following system of linear equation have infinite number of solutions: $(2m - 1)x + 3y - 5 = 0$ and $3x + (n - 1)y - 2 = 0$.
10. For what value of p will the following system of equations have no solution?
 $(2p - 1)x + (p - 1)y = 2p + 1$ and $y + 3x - 1 = 0$
11. If the system of equations $2x + 3y = 7$ and $2ax + (a + b)y = 28$ has infinitely many solutions, then find a and b. **[BOARD 2023]**
12. A fraction becomes $\frac{1}{3}$ when 2 is subtracted from the numerator and it becomes $\frac{1}{2}$ when 1 is subtracted from the denominator. Find the fraction. **[BOARD 2023]**
13. Half of the difference between two numbers is 2. The sum of the greater number and twice the smaller number is 13. Find the numbers. **[BOARD 2023]**
14. The sum of the digits of a two digit number is 9. Also 9 times this number is twice the number obtained by reversing the order of the digits. Find the number.
15. A number consists of two digits. Where the number is divided by the sum of its digits, the quotient is 7. If 27 is subtracted from the number, the digits interchange their places, find the number.
16. A 2-digit number is seven times the sum of its digits. The number formed by reversing the digits is 18 less than the given number. Find the given number. **[BOARD 2023]**
-

17. The sum of the digits of a 2-digit number is 14. The number obtained by interchanging its digits exceeds the given number by 18. Find the number.

[BOARD 2024]

18. Two numbers are in the ratio of 1: 3. If 5 is added to both the numbers, the ratio becomes 1: 2. Find the numbers.

19. A part of monthly hostel charges in a college is fixed and the remaining depends on the number of days one has taken food in the mess. When a student 'A' takes food for 22 days, he has to pay Rs.1380 as hostel charges. Whereas a student 'B' who takes food for 28 days, pays Rs. 1680 as hostel charges. Find the fixed charges and the cost of food per day.

[BOARD 2024]

20. The ratio of income 2 persons is 9:7 and the ratio of their expenditure is 4:3, if each of them manage to save Rs.5000/ month. Find their monthly incomes.

[BOARD 2025]

21. A shop keeper gives books on rent for reading. She takes a fixed charge for first two days and an additional charge for each day thereafter. Latika paid Rs 22 for a book kept for six days, while Anand paid Rs 16 for the book kept for four days. Find the fixed charge and the charge for each extra day.

22. Places A and B are 100 km apart on a highway. One car starts from A and another from B at the same time. If the cars travel in the same direction at different speeds, they meet in 5 hours. If they travel towards each other, they meet in 1 hour. What are the speeds of the two cars?

[BOARD 2023]

23. A train covered a certain distance at a uniform speed. If the train would have been 6 km/hr faster, it would have taken 4 hours less than the scheduled time. And if the train were slower by 6 km/hr, it would have taken 6 hours more than the scheduled time. Find the length of the journey.

24. Anuj had some chocolates and he divided them into two lots A and B. He sold the first lot at the rate of Rs 2 for 3 chocolates and the second lot at the rate of Re 1 per chocolate and got a total of Rs 400. If he had sold the first lot at the rate of Re 1 per chocolate and the second lot at the rate of Rs 4 for 5 chocolates, his total collection would have been Rs 460. Find the total number of chocolates he had.

25. Meena went to a bank to withdraw Rs.2000. She asked the cashier to give her Rs.50 and Rs. 100 notes only. Meena got 25 notes in all. How many notes of Rs. 50 and Rs.100 she received?

[BOARD 2024]

26. A man wished to give Rs.12 to each person and found that he fell short of Rs. 6 when he wanted to give to all the persons present. He therefore, distributed Rs.9 to each person and found that Rs.9 were left over. How much money did he have and how many persons were there?
27. A father's age is three times the sum of the ages of his children. After 5 years, his age will be two times the sum of their ages. Find the present age of the father. **[BOARD 2023]**
28. Three years ago, Rashmi was thrice as old as Namza. Ten years later, Rashmi will be twice as old as Namza. How old are Rashmi and Namza now? **[BOARD 2024]**
29. In a chemistry lab, there is some quantity of 50% acid solution and some quantity of 25% acid solution. How much of each should be mixed to make 10 liters of 40% acid solution? **[BOARD 2024]**
30. The two angles of a right angled triangle other than 90° are in the ratio 2:3. Express the given situation algebraically as a system of linear equations in two variables and hence solve it. **[BOARD 2025]**
31. The perimeter of a rectangle is 70 cm. The length of the rectangle is 5 cm more than twice its breadth. Express the given situation as a system of linear equations in two variables and hence solve it. **[BOARD 2025]**

5 marks:

- For what value of k , which the following pair of linear equations have infinitely many solutions: $2x + 3y = 7$ and $(k + 1)x + (2k - 1)y = 4k + 1$.
- For what value of a and b does the following pair of linear equations have infinitely many solutions: $2x + 3y = 7$, $a(x + y) - b(x - y) = 3a + b - 2$.
- Find the value of p and q for which the system of equations represent coincident lines $2x + 3y = 7$ and $(p + q + 1)x + (p + 2q + 2)y = 4(p + q) + 1$.
- Solve for x and y : $2x - y + 3 = 0$ and $3x - 5y + 1 = 0$.
- Solve graphically: $3x - 4y + 3 = 0$ and $3x + 4y - 21 = 0$. **[BOARD 2024]**
- Draw the graph of the equations $x - y + 1 = 0$ and $3x + 2y - 12 = 0$. Determine the coordinates of the vertices of the triangle formed by these lines and the X-axis and shade the triangular region.
- Solve the pair of linear equations graphically:
 $x + 3y = 12$, $2x - 3y = 12$

Also shade the region bounded by the line $2x - 3y = 2$ and both the coordinate axes

8. Solve the pair of linear equations graphically:

$$x - y = 1, 2x + y = 8$$

Also find the coordinates of the points where the lines represented by the above equation intersect y-axis.

9. The area of rectangle gets reduced by 80 square units, if its length is reduced by 5 units and breadth is increased by 2 units. If we increase the length by 10 units and decrease the breadth by 5 units, the area increases by 50 square units. Find the dimensions of the rectangle. **[BOARD 2024]**

10. Yash scored 40 marks in a test, getting 3 marks for each right answer and losing 1 mark for each wrong answer. Had 4 marks been awarded for each correct answer and 2 marks been deducted for each incorrect answer, then Yash would have scored 50 marks. How many questions were there in the test?

[BOARD 2023 & BOARD 2024]

11. If three times the greater of two numbers is divided by the smaller one, we get 4 as the quotient and 3 as the remainder. Also, if seven times the smaller number is divided by greater one, we get 5 as the quotient and 1 as the remainder. Find the numbers. **[BOARD 2024]**

12. A man lent a part of his money at 10% p.a. and the rate at 15% p.a. His income at the end of the year is Rs 1900. If he had interchanged the rate of interest on the two sums, he would have earned Rs 200 more. Find the amount lent in both cases.

[BOARD 2025]

13. Vijay invested certain amounts of money in two schemes A and B, which offer interest at the rate of 8% per annum and 9% per annum respectively. He received Rs 1860 as the total annual interest. However, had he interchanged the amounts of investments in the two schemes, he would have received Rs 20 more as annual interest. How much money did he invest in each scheme? **[BOARD 2025]**

14. The perimeter of an isosceles triangle is 32 cm. If equal side is $\frac{5}{6}$ of the base, find the area of the triangle. **[BOARD 2025]**

15. The students of a class are made to stand equally in rows. If 3 students are extra in each row, there would be 1 row less. If 3 students are less in a row, there would be 2 more rows. Find the number of students in the class. **[BOARD 2025]**

16. A bag contains some red and blue balls. Ten percent of the red balls, when added to twenty percent of the blue balls, give a total of 24. If three times the number of

red balls exceeds the number of blue balls by 20, find the number of red balls and blue balls. **[BOARD 2025]**

Case based questions:

1. Two schools 'P' and 'Q' decided to award prizes to their students for two games of Hockey Rs x per student and Cricket Rs y per student. School 'P' decided to award a total of Rs 9,500 for the two games to 5 and 4 students respectively; while school 'Q' decided to award Rs 7,370 for the two games to 4 and 3 students respectively.

[BOARD 2023]



Based on the above information, answer the following questions:

(i) Represent the following information algebraically (in terms of x and y). **1**

(ii) (a) What is the prize amount for hockey? **2**

OR

(b) Prize amount on which game is more and by how much? **2**

(iii) What will be the total prize amount if there are 2 students each from two games? **1**

2. A coaching institute of Mathematics conducts classes in two batches I and II and fees for rich and poor children are different. In batch I, there are 20 poor and 5 rich children, whereas in batch II, there are 5 poor and 25 rich children. The total monthly collection of fees from batch I is Rs 9000 and from batch II is Rs 26000. Assume that each poor child pays Rs x per month and each rich child pays Rs y per month. Based on the above information answer the following questions:



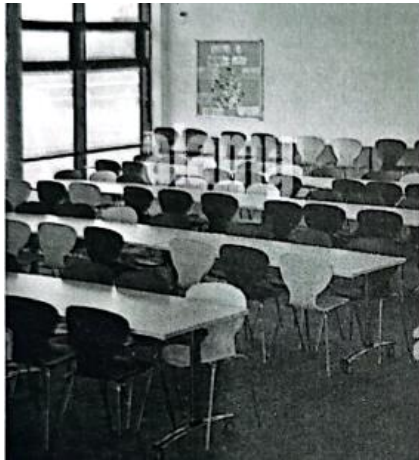
[BOARD 2023]

- (i) Represent the situation in terms of x and y . **1**
- (ii) Find the monthly fee paid by a poor child. **2**

OR

- Find the difference in the monthly fee paid by a poor child and a rich child. **2**
- (iii) If there are 10 poor and 20 rich children in batch II, what is the total monthly collection of fees from batch II? **1**

3. A school is organizing a grand cultural event to show the talent of its students. To accommodate the guests, the school plans to rent chairs and tables from a local supplier. It finds that rent for each chair is Rs 50 and for each table is Rs 200. The school spends Rs 30,000 for renting the chairs and tables. Also, the total number of items(chairs and tables) rented are 300. **[BOARD 2025]**



If the school rents ' x ' chairs and ' y ' tables, answer the following questions:

- (i) Write down the pair of linear equations representing the given information. **1**
- (ii) (a) Find the number of chairs and tables rented by the school. **2**

OR

- (b) If the school wants to spend a maximum of Rs 27,000 on 300 items (tables and chairs) then find the number of chairs and tables it can rent. **2**
- (iii) What is maximum number of tables that can be rented in Rs 30,000 if no chairs are rented? **1**

4. MASK: Masks are an additional step to help prevent people from getting and spreading COVID-19. They provide a barrier that keeps respiratory droplets from spreading. Wear a mask and take every day preventive actions in public settings.
-

Due to ongoing Corona virus outbreak, Wellness Medical store has started selling masks of decent quality. The store is selling two types of masks currently type *A* and type *B*.



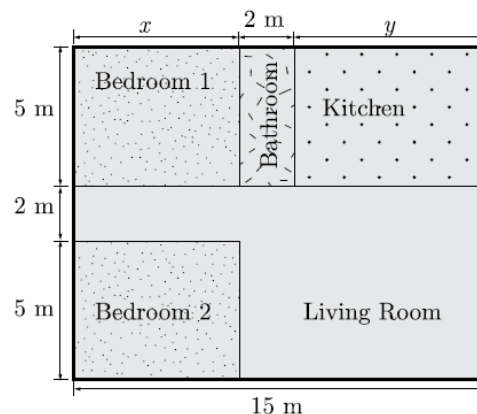
The cost of type *A* mask is Rs. 15 and of type *B* mask is Rs. 20. In the month of April, 2020, the store sold 100 masks for total sales of Rs. 1650.

- (i) How many masks of each type were sold in the month of April? If the store had sold 50 masks of each type, what would be its sales in the month of April? **1**
- (ii) Due to great demand and short supply, the store has increased the price of each type by Rs. 5 from May 1, 2020. In the month of May, 2020, the store sold 310 masks for total sales of Rs. 6875. How many masks of each type were sold in the month of May? **1**
- (iii) What percent of masks of each type sale was increased in the month of May, compared with the sale of month April? **2**

OR

What extra profit did store earn by increasing price in May month. **2**

5. Varsha is a licensed architect and design very innovative house. She has made a house layout for her client which is given below. In the layout, the design and measurements has been made such that area of two bedrooms and kitchen together is 95 sq. m.

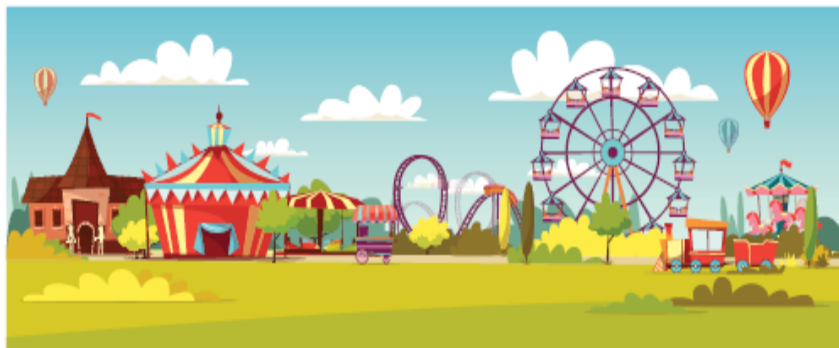


- (i) Which pair of linear equations does describe this situation? **1**
- (ii) What is the length of the outer boundary of the layout. **1**
- (iii) What is the area of bedroom 1? What is the area of living room in the layout? **2**

OR

What is the cost of laying tiles in Kitchen at the rate of Rs. 50 per sq. m? **2**

6. Mr. RK Agrawal is owner of a famous amusement park in Delhi. The ticket charge for the park is Rs 150 for children and Rs 400 for adult. Generally he does not go to park and it is managed by team of staff. One day Mr Agrawal decided to random check the park and went there. When he checked the cash counter, he found that 480 tickets were sold and Rs 134500 was collected. **[BOARD 2024]**



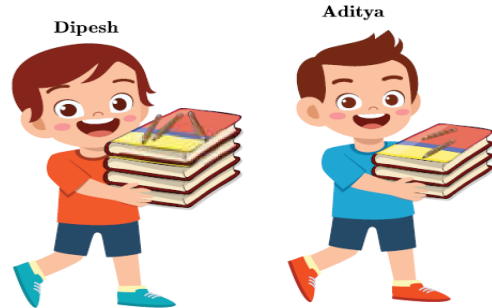
- (i) Let the number of children visited be x and the number of adults visited be y . Which of the following is the correct system of equations that model the problem? **1**
- (ii) How many children visited the park? How many adults visited the park? **1**
- (iii) How much amount collected if 300 children and 350 adults visited the park? **2**

OR

One day total visited children and adults together are 750 and the total amount collected is Rs 212500. What are the number of children and adults visited the park? **2**

7. Dipesh bought 3 notebooks and 2 pens for Rs. 80. His friend Ramesh said that price of each notebook could be Rs. 25. Then three notebooks would cost Rs.75,
-

the two pens would cost Rs. 5 and each pen could be for Rs. 2.50. Another friend Amar felt that Rs. 2.50 for one pen was too little. It should be at least Rs. 16. Then the price of each notebook would also be Rs.16.



Aditya also bought the same types of notebooks and pens as Dipesh. He paid 110 for 4 notebooks and 3 pens.

- (i) Whether the estimation of Ramesh and Amar is applicable for Aditya? **1**
- (ii) Let the cost of one notebook be x and that of pen be y . Which of the following set describe the given problem? **1**
- (iii) What is the exact cost of the notebook? **2**

OR

What is the exact cost of the pen? What is the total cost if they purchase the same type of 15 notebooks and 12 pens. **2**